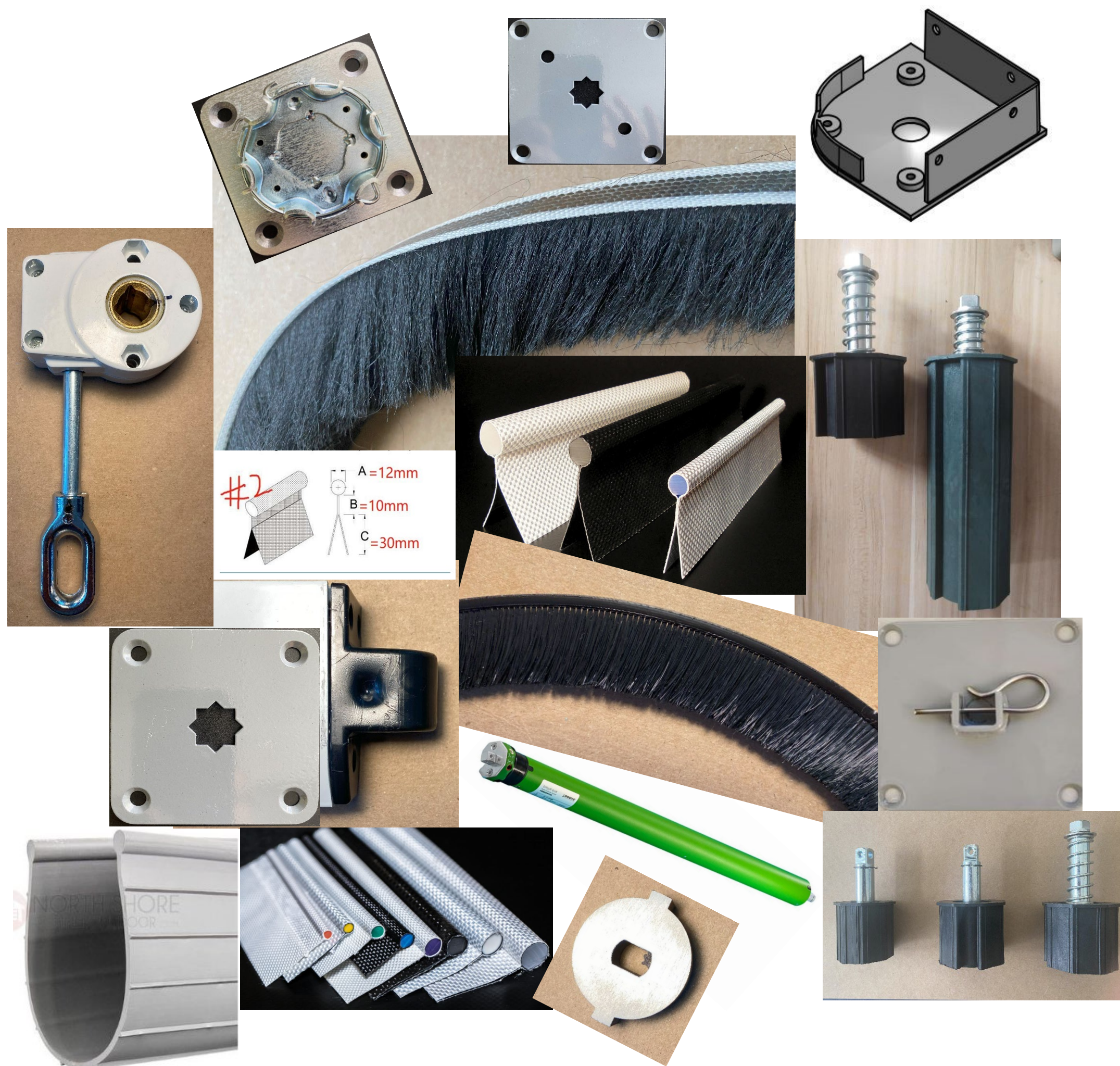




Motorized Screen Supply

Direct Sourcing Parts for Motorized Sun Screen Manufactures

PRODUCT CATALOG



OUR MISSION:

Motorized Screen Supply, (MSS) is focused on resourcing and supplying the highest quality, most cost effective parts for motorized screen manufactures. Because we work directly with manufactures, our products are modified and or developed by screen manufactures. This catalog represents production parts currently being supplied to manufactures. We have assisted many manufactures in streamlining production while enhancing the overall quality of their product offerings. MSS parts fit your system, not the other way around. Don't just make do with what is offered. Contact us to improve your products while saving money.

CONTACT INFO:

Motorized Screen Supply

Address: P.O. Box 4226 Odessa, Florida 33556
 Customer Service: Nicole McKenzie 505-563-0668
 Email: nicole @motorizedscreensupply.com
 Web Site: www. motorizedscreensupply.com

CONTENTS

Brush - (pile weatherstripping) Pg. 3	Tubular Motors 120vPg. 3
- Bottom Bar Brush	- Single Channel Remote
- Hood Brush	- Multi Channel Remote
	- Wi-Fi Bridge
	- Drive Gear
Drive Gear - Heavy DutyPg. 3	Idler Bearings Pg. 4
- Drive Gear (solid aluminum)	- Slide Idlers
	- Spring Idler
Idler Bearing Mounting Plates Pg. 4	Motor Mounting Plates Pg. 4
- Cradle Mounting Plate	- Round Head Mounting Plate
- Spring Mounting Plate	- Star Hole Mounting Plate
End Caps - (housing)..... Pg. 4	Zipper Pg. 5
- Square Profile	- Coil Zipper
- Rounded Profile	- Molded Zipper
- Articulated Profile	
Rubber Seal - (bottom bar) Pg. 5	Keder Pg. 5
- 4" Rubber Seal	- Single Flap
- 6" Rubber Seal	- Double Flap
Cable Screen Mounting BracketPg. 6	OverridePg. 6
- 5.5" Bracket	- 4" Override
	- 8" Override
Hand Cranks Pg. 6	Cable Screen Hardware Pg. 7
- 42" long	- Cable Hangers
- 60" long	- Cable Terminators
	- Cable Floor Anchors
Cable Wire Gide - (bottom bar) Pg. 7	Safety Wires for Cable Screen Pg. 7
- Bottom Bar Cable Gide - Aluminum	- Safety Wire Stainless Steel
Cable Wire - (stainless steel) Pg. 7	Terms Pg. 8
- 4-mm Stainless Steel Wire	- Purchasing Terms

BRUSH (pile weatherstripping)

Bottom Bar Brush

(Engineered to Fit, Samples Supplied for Verification)



12.5/37-12P6L-132

- Minimum order: 30,000 ft. - 200 ft. spools
- 1" brush - (3) spools / box
- 1-1/2" & 2" brush - (2) spools / box
- Each 200 ft. spool - one continuous piece
- Note: one brush size per pallet
- Polypropylene brush and spline
- Ship ocean LCL (60 day delivery, A.R.O)

Part #	Description	Price
12.5/25-12P6L-132	1/2" spline x 1" length - brush	/ ft. del.
12.5/37-12P6L-132	1/2" spline x 1-1/2" length - brush	/ ft. del.
12.5/50-12P6L-132	1/2" spline x 2" length - brush	/ ft. del.
12.5/25-12P8L-132	1/2" spline x 1" length - brush	/ ft. del.
12.5/37-12P8L-132	1/2" spline x 1-1/2" length - brush	/ ft. del.
12.5/50-12P8L-132	1/2" spline x 2" length - brush	/ ft. del.
Part #	Description	Price
4.8/25-4P2L-80	1/4" spline x 1" length - brush	/ ft. del.
4.8/25-4P2L-132	1/4" spline x 1" length - brush	/ ft. del.
4.8/37-4P2L-80	1/4" spline x 1-1/2" length - brush	/ ft. del.
4.8/37-4P2L-132	1/4" spline x 1-1/2" length - brush	/ ft. del.
4.8/50-4P2L-132	1/4" spline x 2" length - brush	/ ft. del.
		/ ft. del.

Housing Brush - (soft & hard)

(Engineered to Fit, Samples Supplied for Verification)



3.3/25-8P80-20
Soft Brush

- Minimum order: 30,000 ft. - 500 ft. spools
- (3) 500 ft. spools / box
- Each 500 ft. spool - one continuous piece
- Note: one brush size per pallet
- Polypropylene brush and spline
- Ship ocean LCL (60 day delivery, A.R.O)

Part #	Description	Price
3.3/9.5-8P132-20	1/8" spline x 3/8" length - soft brush	/ ft. del.
3.3/23.8-8P132-20	1/8" spline x 15/16" length - soft brush	/ ft. del.
3.3/25-8P132-20	1/8" spline x 1" length - soft brush	/ ft. del.
3.3/9.5-8P80-20	1/8" spline x 3/8" length - soft brush	/ ft. del.
3.3/23.8-8P80-20	1/8" spline x 15/16" length - soft brush	/ ft. del.
3.3/25-8P80-20	1/8" spline x 1" length - soft brush	/ ft. del.
3.3/9.5-60	1/8" spline x 3/8" length - hard brush	/ ft. del.
3.3/23.8-60	1/8" spline x 15/16" length - hard brush	/ ft. del.
3.3/25-60	1/8" spline x 1" length - hard brush	/ ft. del.
3.3/9.5-80	1/8" spline x 3/8" length - hard brush	/ ft. del.
3.3/23.8-80	1/8" spline x 15/16" length - hard brush	/ ft. del.
3.3/25-80	1/8" spline x 1" length - hard brush	/ ft. del.

TUBULAR MOTORS

Dooya Tube Motors

(Sample Supplied for Verification)



DM45EAF/S-15/32

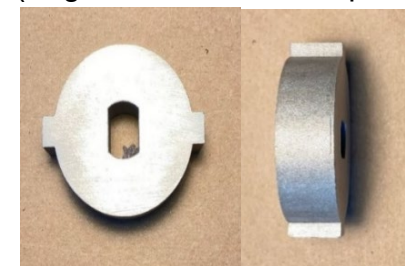
- Minimum order: 100 motors
- One order can contain both motors
- No minimum on remotes or Wi-Fi bridge
- Electronic limits & object detection
- (5) year warranty
- Ship ocean LCL (90 day delivery, A.R.O)

Part #	Description	Price
DM45EAF/S-15/32	120V motor - 14 ft. white cord, plug	\$ ea. del.
DM45EAF/S-50/13	120V motor - 14 ft. white cord, plug	\$ ea. del.
DD-2700H	single channel remote w/ battery	\$ ea. del.
DD-2702H	15 channel remote w/ battery	\$ ea. del.
DD-115H	single chnl. remote / battery key chain	\$ ea. del.
DDL02	drive gear - Dooya plastic	\$ ea. del.
DD-7002B	wi-fi bridge	\$ ea. del.

DRIVE GEAR - (solid aluminum)

Motor Drive Gear - (heavy duty)

(Engineered to Fit, Samples Supplied for Verification)



HDG/DY

- Minimum order: 500 pieces
- Solid ACD-12 aluminum
- Ship ocean LCL (60 day delivery, A.R.O)

Part #	Description	Price
HDG/DY	2-1/8" wide x 5/8" thick - drive gear	\$ ea. del.

IDLER BEARINGS

Idlers

(Engineered to Fit, Samples Supplied for Verification)



57/60 57/70 76/70/S 76/70/ST

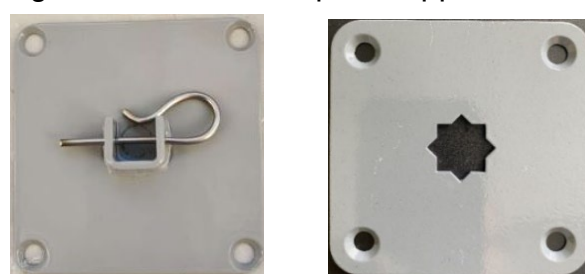
- Minimum order for 80mm, 70mm & 60mm idlers: 2,000 pieces
- Minimum 70mm triple base idler: 1,000 pieces
- An order can contain multiple sized idlers
- Nickel chrome plated shaft / spring
- 32-rpm rated steel ball bearings
- Ship ocean LCL (60 day delivery, A.R.O)

Part #	Description	Price
57/60	60mm - 2-1/4" long post - slide idler	\$ ea. del.
57/70	70mm - 2-1/4" long post - slide idler	\$ ea. del.
76/70/S	70mm - 3" long post - spring idler	\$ ea. del.
76/80/S	80mm - 3" long post - spring idler	\$ ea. del.
76/70/ST	70mm triple base - 3" long post - spring idler	\$ ea. del.

IDLER MOUNTING PLATES

Idler Mounting Plates

(Engineered to Fit, Samples Supplied for Verification)



100/CIP 100/SIP

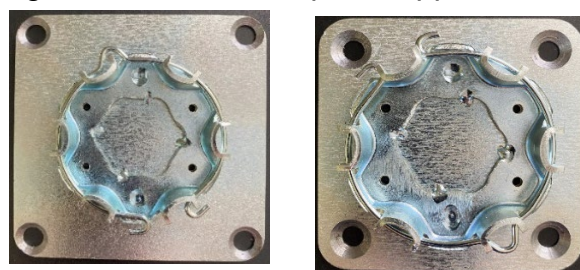
- Minimum order: 1,000 pieces
- An order can contain multiple sized and plate types
- Powder coated steel plate
- Screw holes are counter sunk
- Ship ocean LCL (60 day delivery, A.R.O)

Part #	Description	Price
85/SIP	3-3/8" x 3-3/8" - (85mm) star hole plate	\$ ea. del.
100/SIP	4" x 4" - (100mm) star hole plate	\$ ea. del.
85/CIP	3-3/8" x 3-3/8" - (85mm) cradle plate	\$ ea. del.
100/CIP	4" x 4" - (100mm) cradle plate	\$ ea. del.

MOTOR MOUNTING PLATES

Motor Brackets

(Engineered to Fit, Samples Supplied for Verification)



100/RMP 85/RMP

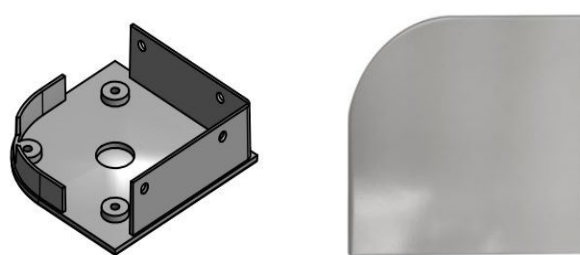
- Minimum order: 1,000 pieces
- Orders increments 100 pieces
- An order can contain multiple sized and brackets types
- Galvanized steel bracket
- Screw holes are counter sunk
- Ship ocean LCL (60 day delivery, A.R.O)

Part #	Description	Price
85/RMP	3-3/8" x 3-3/8" - (85mm) round motor head	\$ ea. del.
100/RMP	3-3/8" x 3-3/8" - (85mm) round motor head	\$ ea. del.
85/BMP	3-3/8" x 3-3/8" - (85mm) square drive motor head	\$ ea. del.
100/BMP	4" x 4" - (100mm) square drive motor head	\$ ea. del.

END CAPS

Housing End Caps - (aluminum)

(Engineered to Fit, Samples Supplied for Verification)



5.5/RP 4.5/RP

- Minimum order: 5,000 pieces
- Orders increments 50 pieces
- An order can contain multiple sizes & colors
- Minimum order any sized or color: 1,000 pieces
- Customer supplies metal samples for matching
- Powder coated ACD-12 aluminum
- Ship ocean LCL (60 day delivery, A.R.O)

Part #	Description	Price
4.5/RP	4-1/2" - rounded corner profile	\$ ea. del.
5.5/RP	5-1/2" - rounded corner profile	\$ ea. del.
7/RP	7" - rounded corner profile	\$ ea. del.
4.5/AP	4-1/2" - articulated corner profile	\$ ea. del.
5.5/AP	5-1/2" - articulated corner profile	\$ ea. del.
7/AP	7" - articulated corner profile	\$ ea. del.
4.5/SP	4-1/2" - square corner profile	\$ ea. del.
5.5/SP	5-1/2" - square corner profile	\$ ea. del.
7/SP	7" - square corner profile	\$ ea. del.

ZIPPER

Zipper - (coil & molded)

(Samples Supplied for Verification)



5/CZ-B



5/MZ-B

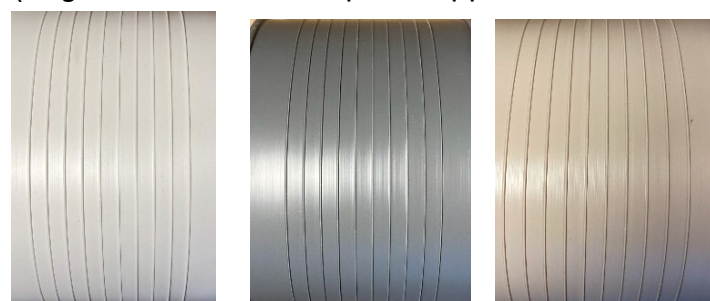
- Minimum order #5 coil or molded zipper: 10,000 yds.
- Minimum order # 8 coil or molded zipper: 10,200 yds.
- #5 zipper - 200 yd. rolls
- #8 zipper - 150 yd. rolls
- #5 & #8 zipper has no more than (3) breaks / roll
- An order can contain multiple sizes and colors
- Ship ocean LCL (60 day delivery, A.R.O)

Part #	Description	Price
5/CZ-B	#5 coil - black	\$ / yd. del.
5/CZ-W	#5 coil - white	\$ / yd. del.
8/CZ-B	#8 coil - black	\$ / yd. del.
8/CZ-W	#8 coil - white	\$ / yd. del.
5/MZ-B	#5 molded - black	\$ / yd. del.
5/MZ-W	#5 molded - white	\$ / yd. del.
8/MZ-B	#8 molded - black	\$ / yd. del.
8/MZ-W	#8 molded - white	\$ / yd. del.

RUBBER SEAL

Bottom Bar Seal - (rubber)

(Engineered to Fit, Samples Supplied for Verification)



4/RS-W

4/RS-G

4/RS-BE

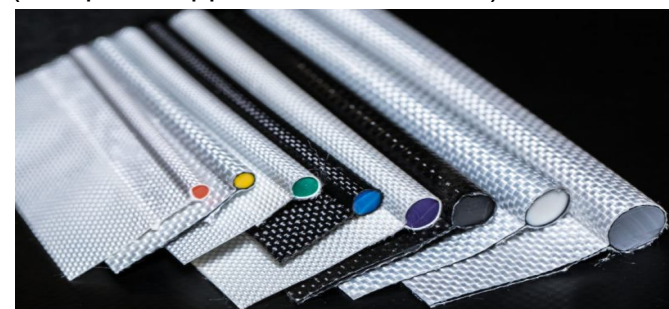
- Minimum Order: 6,000 ft. / color - 200 ft. rolls
- An order can contain both sizes & multiple colors
- Standard colors only, no color matching
- Colors may vary slightly from order to order
- Ship ocean LCL (60 day delivery, A.R.O)

Part #	Description	Price
4/RS-W	4" wide - white	\$ / ft. del.
4/RS-B	4" wide - black	\$ / ft. del.
4/RS-G	4" wide - grey	\$ / ft. del.
4/RS-BR	4" wide - bronze	\$ / ft. del.
4/RS-IV	4" wide - ivory	\$ / ft. del.
4/RS-BE	4" wide - beige	\$ / ft. del.
6/RS-W	6" wide - white	\$ /ft. del.
6/RS-B	6" wide - black	\$ / ft. del.
6/RS-G	6" wide - grey	\$ / ft. del.
6/RS-BR	6" wide - bronze	\$ / ft. del.
6/RS-IV	6" wide - ivory	\$ / ft. del.
6/RS-BE	6" wide - beige	\$ / ft. del.

KEDER

Keder - (single flap welded)

(Samples Supplied for Verification)

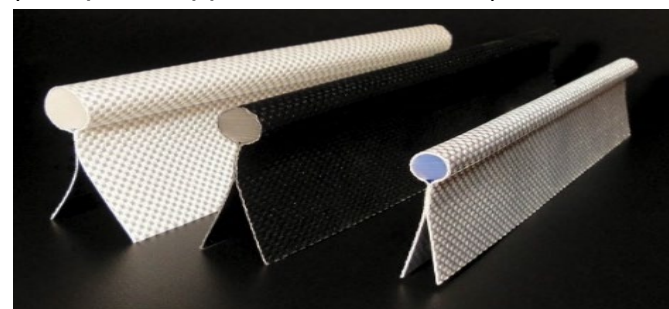


- Minimum order: 2,186 yds. (5) spools / color / size
- 437 yd. spool - one continuous piece
- (1) spool / box
- An order can contain multiple sizes and colors
- Additional keder sizes available
- PVC coated polyester fabric
- Ship ocean LCL (60 day delivery, A.R.O)

Part #	Description	Price
4S/10/10-W	white - 4mm cord, 10mm flap, 10mm weld	\$ / yd. del.
4S/10/10- B	black - 4mm cord, 10mm flap, 10mm weld	\$ / yd. del.
4S/10/25-W	white - 4mm cord, 10mm flap, 25mm weld	\$ / yd. del.
4S/10/25- B	black - 4mm cord, 10mm flap, 25mm weld	\$ / yd. del.
5S/5/10-W	white - 5mm cord, 5mm flap, 10mm weld	\$ / yd. del.
5S/5/10- B	black - 5mm cord, 5mm flap, 10mm weld	\$ / yd. del.
5S/10/25-W	white - 5mm cord, 10mm flap, 25mm weld	\$ / yd. del.
5S/10/25- B	black - 5mm cord, 10mm flap, 25mm weld	\$ / yd. del.
6S/10/10-W	white - 6mm cord, 10mm flap, 10mm cord	\$ / yd. del.
6S/10/10- B	black - 6mm cord, 10mm flap, 10mm weld	\$ / yd. del.
6S/10/25-W	white - 6mm cord, 10mm flap, 25mm weld	\$ / yd. del.
6S/10/25-B	black - 6mm cord, 10mm flap, 25mm weld	\$ / yd. del.

Keder - (double flap welded)

(Samples Supplied for Verification)



- Minimum order: 2,186 yds. (5) spools / color / size
- 437 yd. spool - one continuous piece
- (1) spool / box
- An order can contain multiple sizes and colors
- Additional keder sizes available
- PVC coated polyester fabric
- Ship ocean LCL (60 day delivery, A.R.O)

Part #	Description	Price
4D/10/10-W	white - 4mm cord, 10mm flap, 10mm weld	\$ / yd. del.
4D/10/10- B	black - 4mm cord, 10mm flap, 10mm weld	\$ / yd. del.
4D/10/25-W	white - 4mm cord, 10mm flap, 25mm weld	\$ / yd. del.
4D/10/25- B	black - 4mm cord, 10mm flap, 25mm weld	\$ / yd. del.
5D/5/10-W	white -- 5mm cord, 5mm flap, 10mm weld	\$ / yd. del.
5D/5/10- B	black, 5mm cord, 5mm flap, 10mm weld	\$ / yd. del.
5D/10/25-W	white - 5mm cord, 10mm flap, 25mm weld	\$ / yd. del.
5D/10/25- B	black - 5mm cord, 10mm flap, 25mm weld	\$ / yd. del.
6D/10/10-W	white - 6mm Cord, 10mm Flap, 10mm Weld	\$ / yd. del.
6D/10/10- B	black - 6mm cord, 10mm flap, 10mm weld	\$ / yd. del.
6D/10/25-W	white - 6mm cord, 10mm flap, 25mm cord	\$ / yd. del.
6D/10/25-B	black - 6mm cord, 10mm flap, 25mm weld	\$ / yd. del.

CABLE SCREEN MOUNTING BRACKET

Cable Screen Bracket

(Engineered to Fit, Samples Supplied for Verification)



5.5/CB

- Minimum order: 200 pieces - 200 pieces / color
- (1) order - (2) brackets
- (1) pair required per screen
- Valance can be attached to bracket
- Customer supplies metal samples for matching
- Powder coated steel bracket
- Ship ocean LCL (60 day delivery, A.R.O)

Part #	Description	Price
5.5/CB	5-5/8" wide x 5-1/4" high overall	\$ / pair del.

OVERRIDES

Override

(Samples Supplied for Verification)



OR/4/7

- Minimum order: 200 pieces - 250 pieces / color
- 11/1 turn ratio - brass gears
- 7/1 turn ratio - brass gears
- 5/1 turn ratio - stainless steel gears
- 3/1 turn ratio - stainless steel gears
- 4" or 8" length shaft available
- Shaft finish - brush aluminum
- Hook finish - nickel plated chrome
- Standard housing finish - white
- Customer supplies metal samples for matching
- Ship ocean LCL (60 day delivery, A.R.O)

Part #	Description	Price
OR/4/11	4" long shaft - 11/1 turn ratio	\$ each del.
OR/4/7	4" long shaft - 7/1 turn ratio	\$ each del.
OR/4/5	4" long shaft - 5/1 turn Ratio	\$ each del.
OR/4/3	4" long shaft - 3/1 turn ratio	\$ each del.
OR/8/11	8" long shaft - 11/1 turn ratio	\$ each del.
OR/8/7	8" long shaft - 7/1 turn ratio	\$ each del.
OR/8/5	8" long shaft - 5/1 turn ratio	\$ each del.
OR/8/3	8" long shaft - 3/1 turn ratio	\$ each del.

HAND CRANKS

Hand Cranks - (90-deg.)

(Engineered to Fit, Samples Supplied for Verification)



HC/42-W

- Minimum order: 500 pieces
- Available in 42" and 60" overall lengths
- Handle adjust from straight to 90-deg.
- Standard finishes: white & black
- Metal finishes: nickel plated chrome
- An order can contain multiple sizes and colors
- Ship ocean LCL (60 day delivery, A.R.O)

Part #	Description	Price
HC/42-W	42" long, 90-deg. crank - white	\$ ea. del.
HC/42-B	42" long, 90-deg. crank - black	\$ ea. del.
HC/60-W	60" long, 90-deg. crank - white	\$ ea. del.
HC/60-B	60" long, 90-deg. crank - black	\$ ea. del.

Cable Screen Hardware

Cable Hardware

(Engineered to Fit, Samples Supplied for Verification)



SS-CHP

- Minimum order: 500 packets
- Each Packet Contains: (2) cable hangers, (2) cable floor anchors, (2) cable terminators/tighteners, & (4) locking nuts
- (1) packet required per screen
- 116-ga. stainless steel
- Ship ocean LCL (60 day delivery, A.R.O)

Part #	Description	Price
SS-CHP	cable hardware packet	\$ ea. pk. del.

Cable Guide

(Engineered to Fit, Samples Supplied for Verification)



CG/4

- Minimum order: 500 packets
- One packet contains (2) guides
- (1) packet required per screen
- ACD-12 aluminum
- Finish - anodized or brushed aluminum
- Ship ocean LCL (60 day delivery, A.R.O)

Part #	Description	Price
CG/4	4mm cable guide packet	\$ ea. pk. del.

Safety Wire

(Engineered to Fit, Samples Supplied for Verification)



SS-SW

- Minimum order: 500 packets
- Each packet contains (2) safety wire assemblies w/ screws
- (1) packet required per screen
- 116-ga. stainless steel
- Ship ocean LCL (60 day delivery, A.R.O)

Part #	Description	Price
SS-SW	safety wire assembly packet	\$ ea. pk. del.

Cable - (stainless steel)

(Samples Supplied for Verification)



4/316-SS

- Minimum order: 1,000 ft. - 1,000 ft. spools
- Addition cable wire gauges available
- Ship ocean LCL (60 day delivery, A.R.O)

Part #	Description	Price
4/316-SS	4mm - 316 stainless steel cable	\$ spool del.

Purchasing Terms

- Samples will be supplied to confirm fit, function, and quality for existing parts.
- Final production samples will be supplied to confirm fit, function, and quality for new or modified parts.
- Pricing and payments in USD.
- Unit pricing is FOB delivered.
- Customer is responsible to verify correctness of all deliveries.
- Production occurs in three - four weeks, with an additional 45 days of shipping prior to delivery.
- Motorized Screen Supply is not responsible for delivery delays due to unforeseen or unscheduled shipping delays.
- Scheduled holidays may delay shipping and delivery schedules.
- Payment terms with approved credit: 30% at order, 70% due upon delivery.
- Payment terms without credit: 100% due at order.
- An order will not be generated until 30% or full payment is received.
- A finance charge of 2% will be added to all unpaid balances over 30 days.